

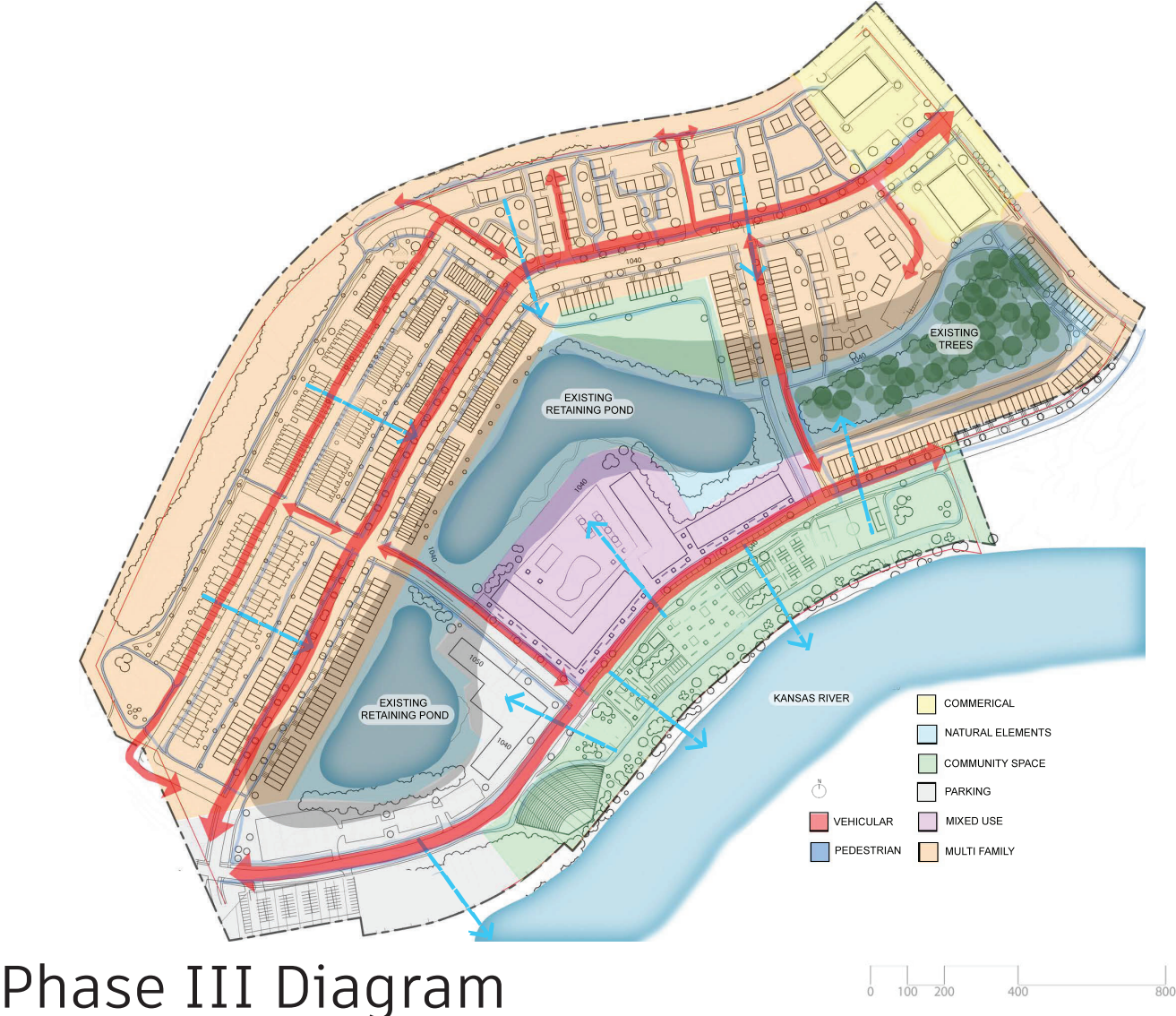
CONNECTION

Lyndsey Gerbec

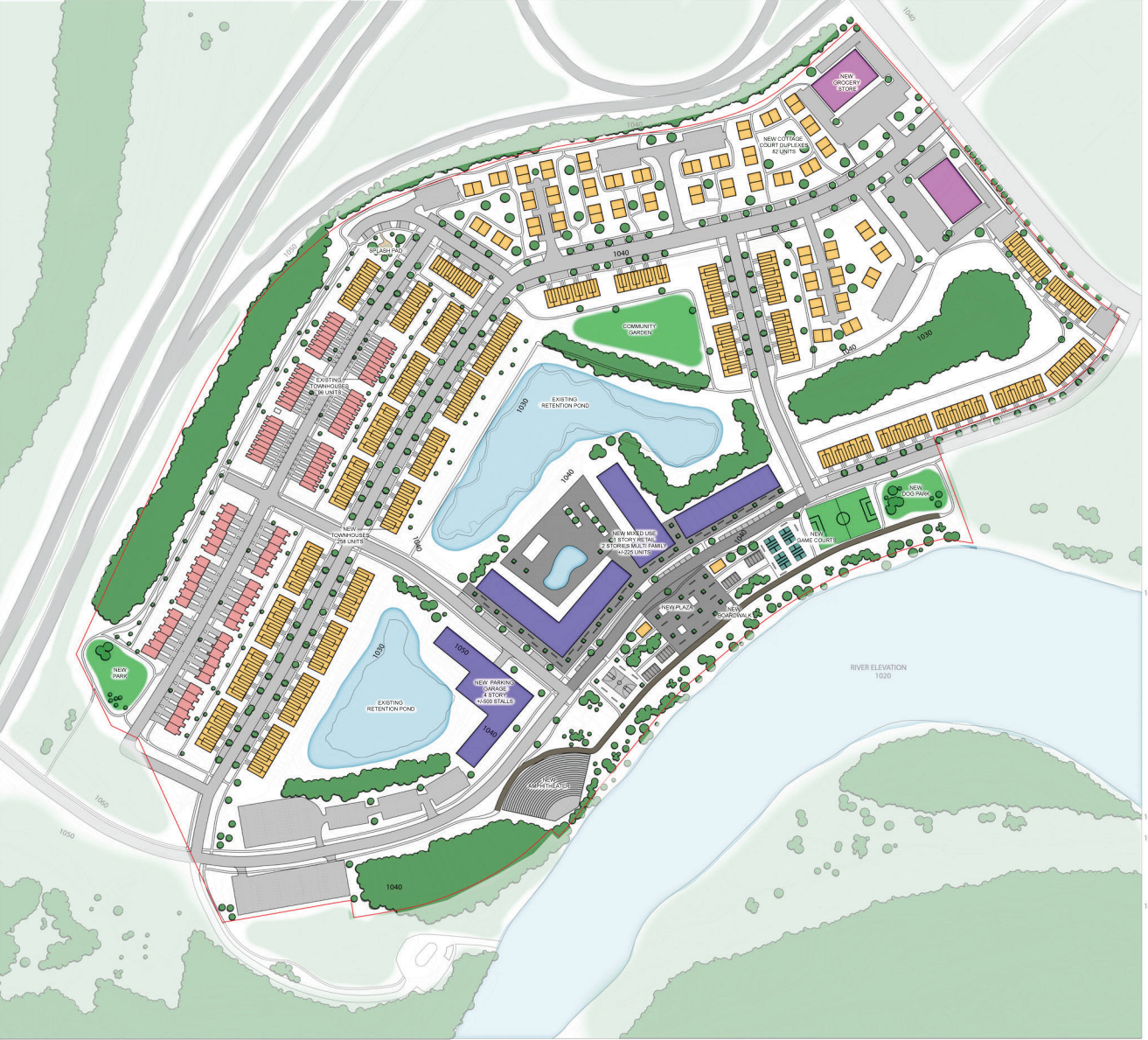
A design that connects people to a fruitful landscape, the surrounding Ogden community, and relationships with each other. This neighborhood is intentionally designed to create a vibrant destination where one does not currently exist. Through sustainable development, an immersive experience is created for residents and the local community to enjoy. Within the complex, there are a variety of housing types, such as townhomes, duplexes, and condominiums, to meet the needs of a multitude of users in their current life situations. Commercial spaces invite local vendors to sell goods, while other storefronts hold room for amenities. This commercial zone is used as a cornerstone location for drawing people together, as it sits centrally. Flowing nearby are areas for water runoff and rain harvesting. A variety of outdoor spaces are adaptable to hold large scale events to draw people to Ogden. These include a large amphitheater, game yard, and sports fields. This connection continues as native plants and community gardens create a biophilic response for residents. A trail intertwines around the neighborhood to keep the community active and interacting with one another.



Phase I & II Site Plan



Phase III Diagram



Phase III Site Plan



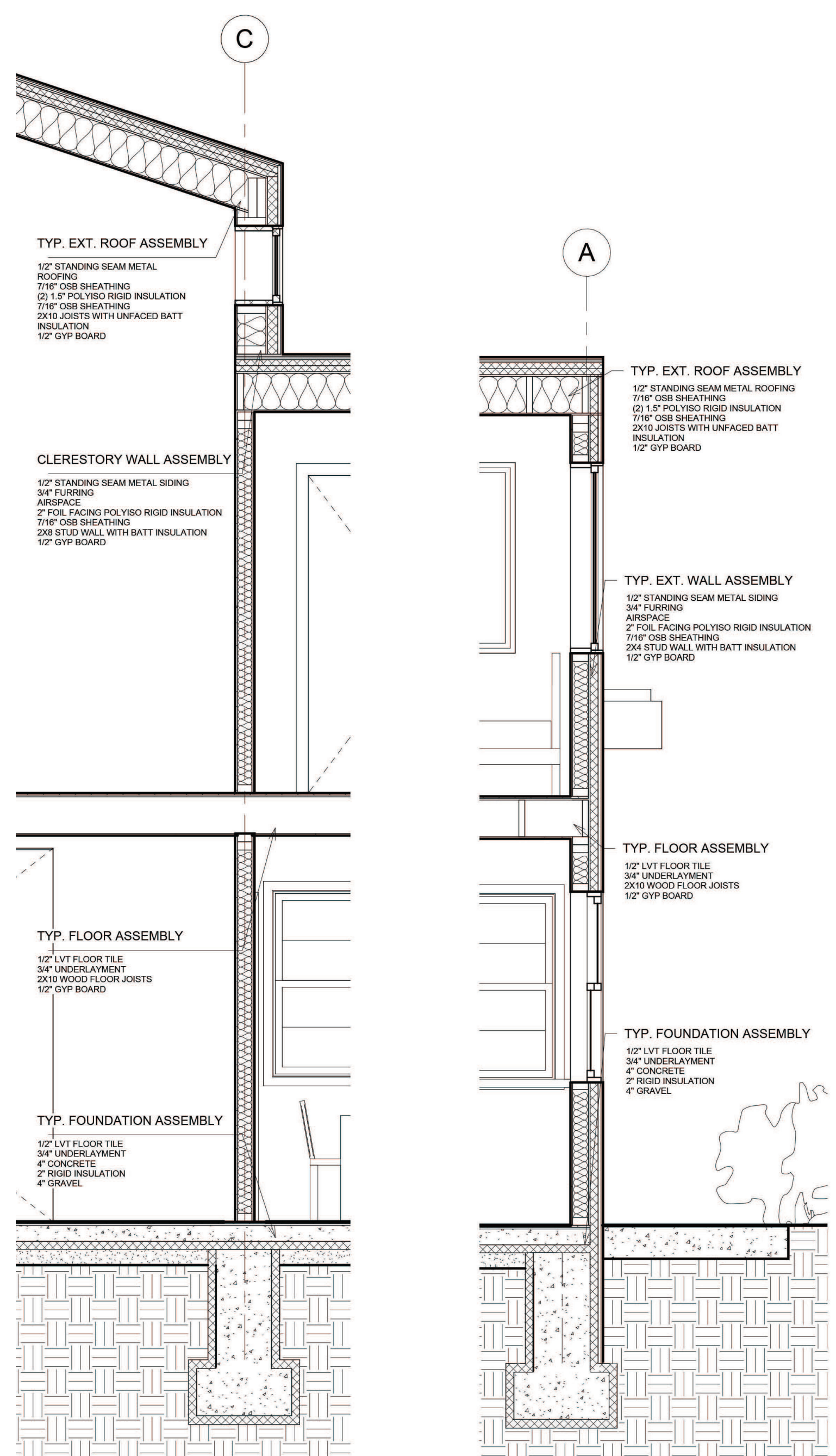
Townhouse Entry & Vibrant Streetscape



View of Townhouses From the Trail & Interstate



Experiential Wall Section



A-A Section Through Clerestory B-B Section Through Exterior Wall

Wall Sections



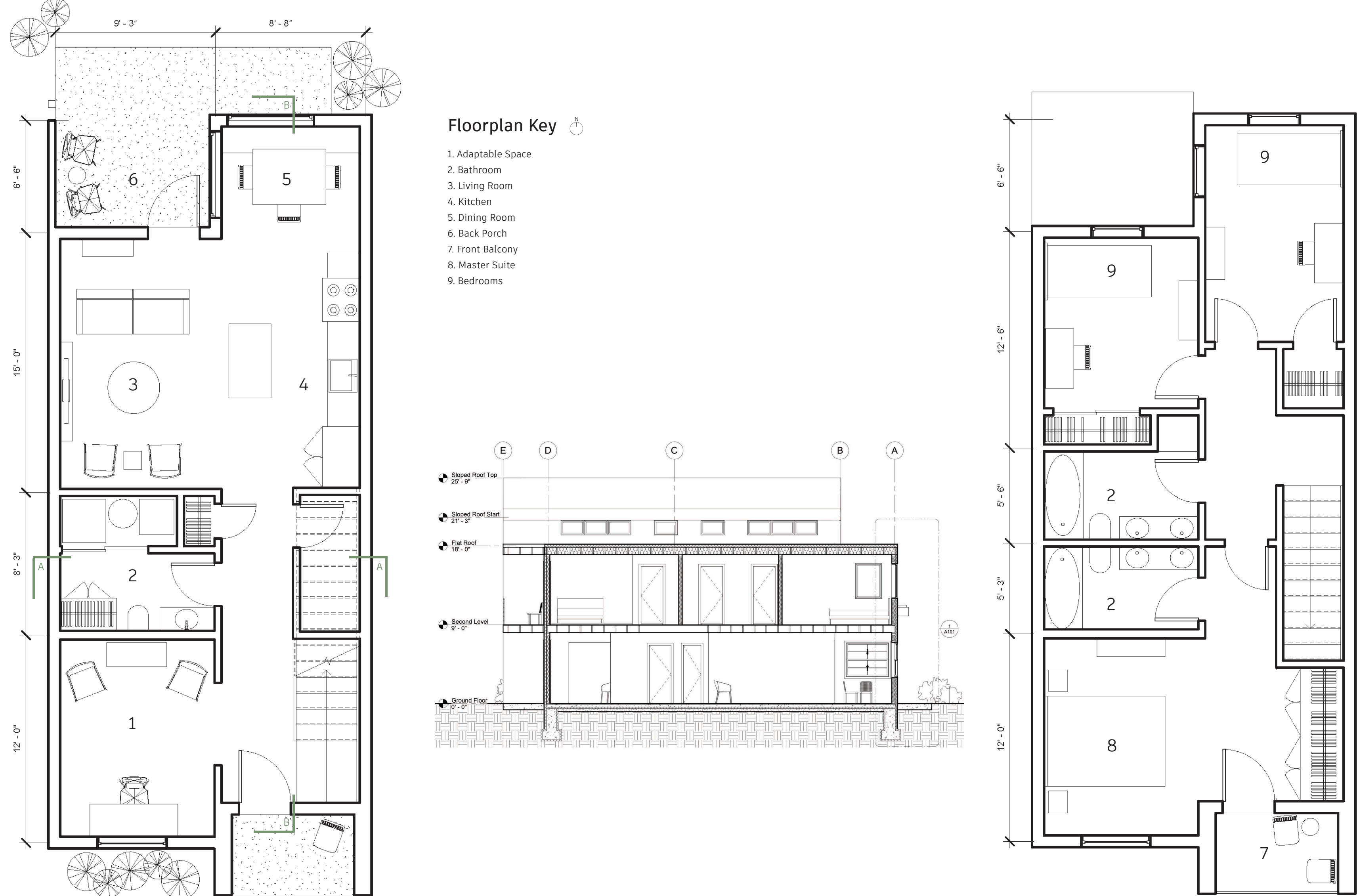
Trail Experience Around Native Plants



An Adaptable Space for Lifestyle Needs



Mixed-Use Towncenter



Level 1 Townhouse Section Cut B-B Level 2



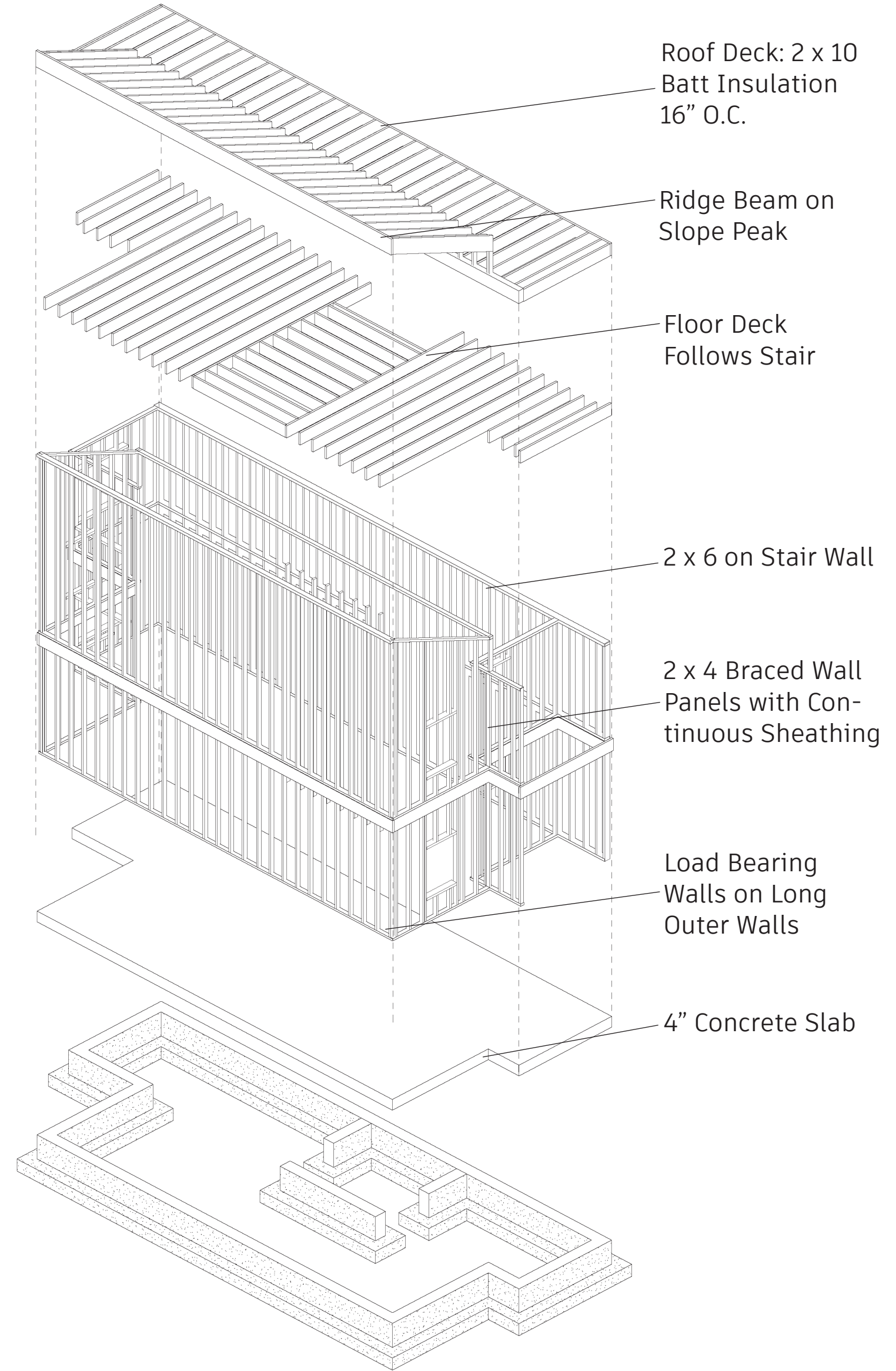
A Lively Open Concept for Main Living Areas



Elevation of Front Facade



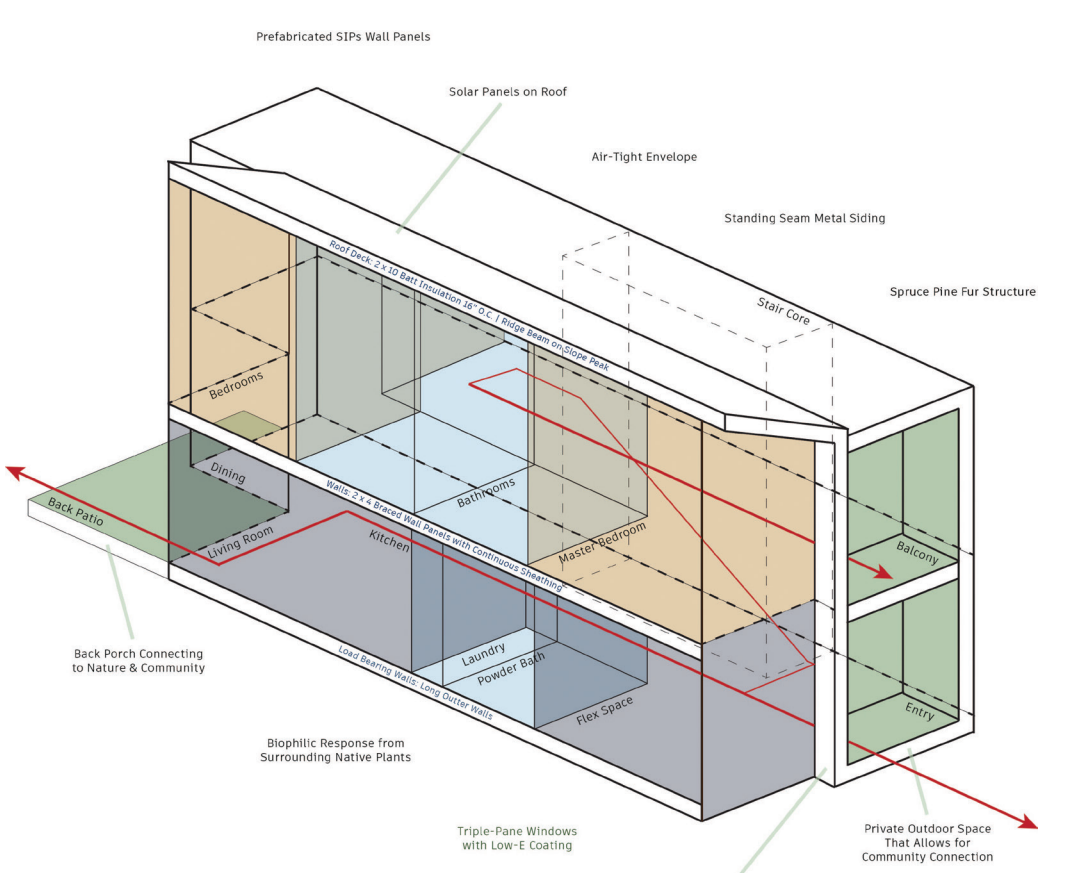
Elevation of Back Facade



Structure

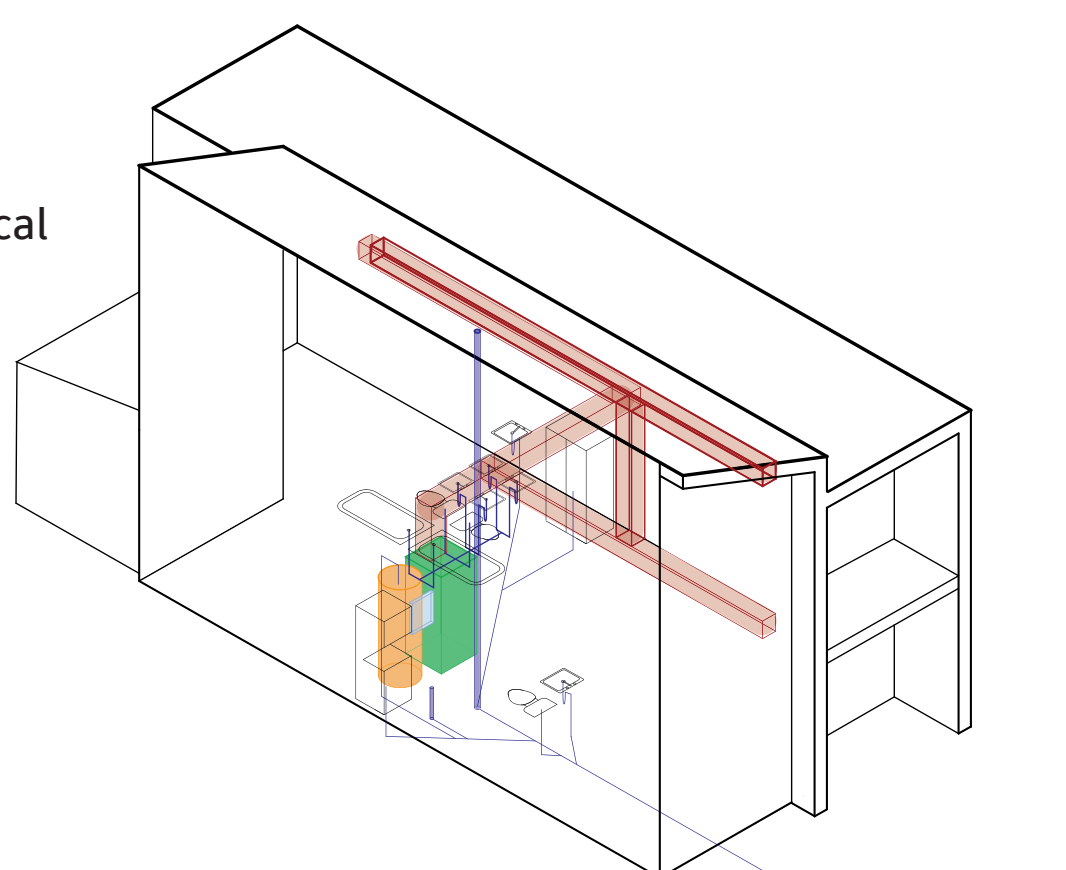
Layout & Circulation

- Common Area
- Outdoor Space
- Bedrooms
- Plumbing Core
- Illustrating Floors
- Circulation



Plumbing & Mechanical

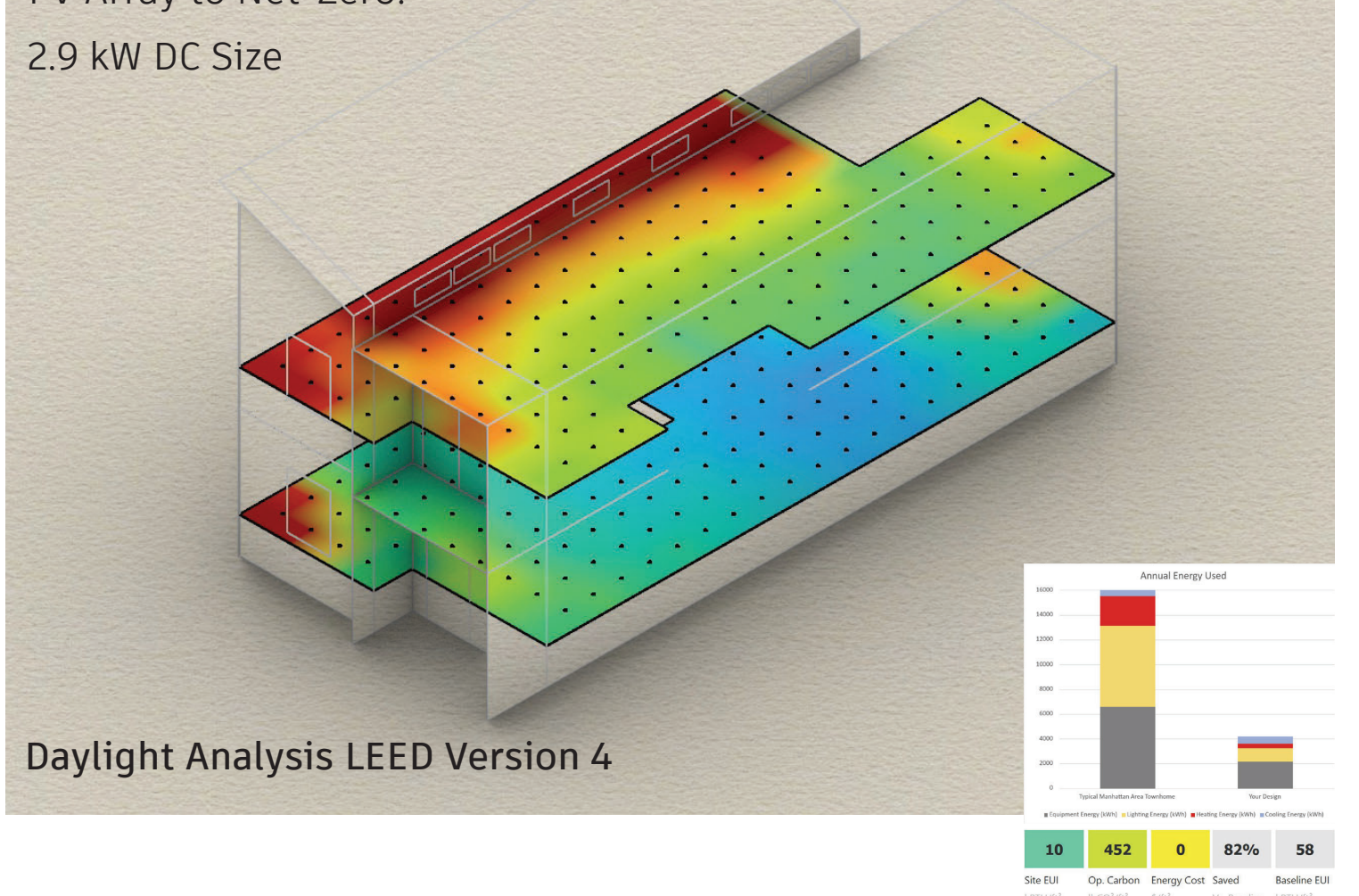
- HVAC Ducts
- Air Return
- Plumbing
- Water Heater
- Air Handling Unit
- Plumbing Fixtures



Townhouse Flow

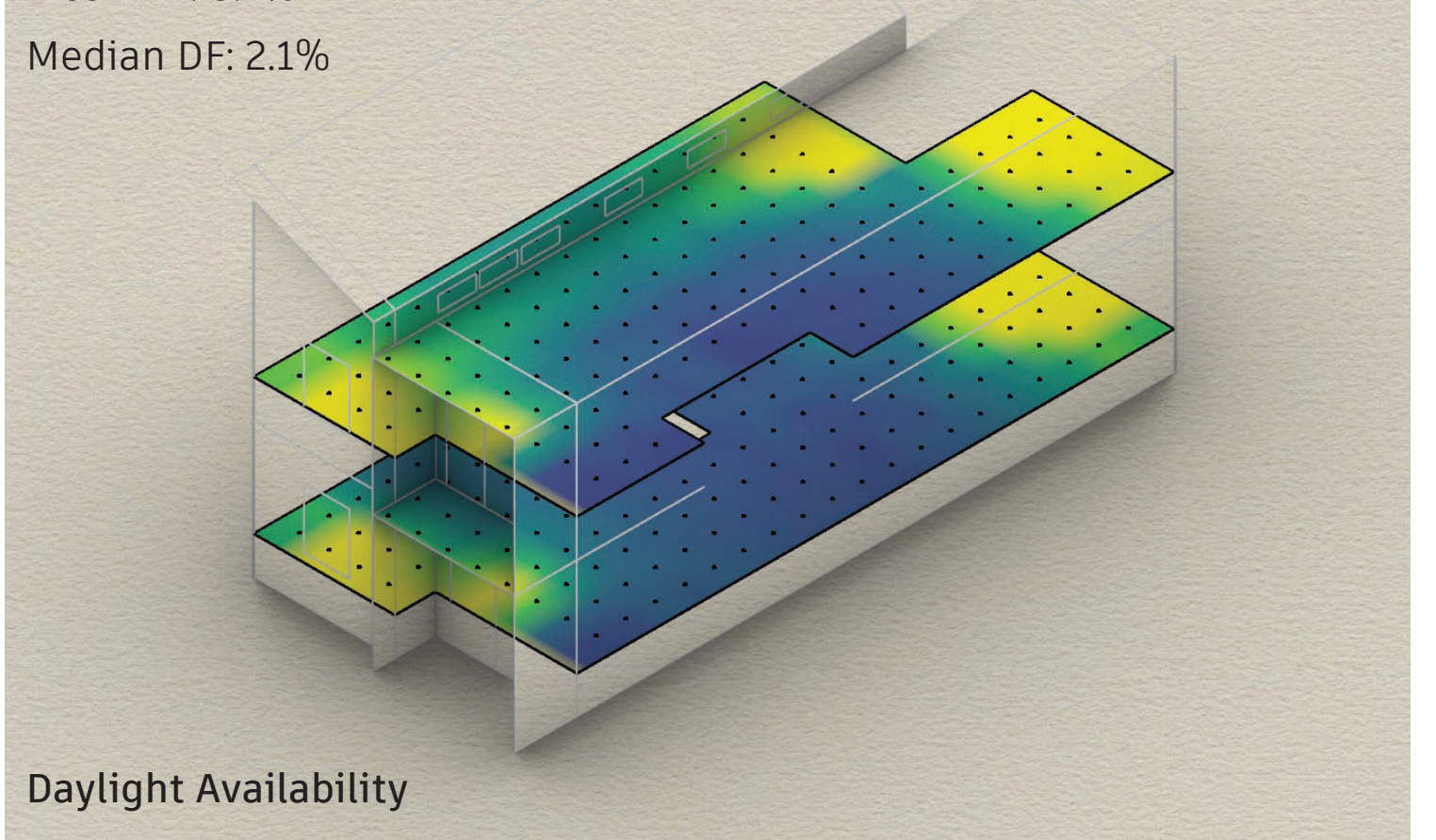
Thermal Analysis

Total Energy: 4173 kWh/Year
PV Array to Net-Zero:
2.9 kW DC Size



Daylight Analysis LEED Version 4

9am: 92.0% 300-3000 lux
3pm: 97.4% 300-3000 lux
Mean DF: 3.1%
Median DF: 2.1%



Energy Analysis